

Model

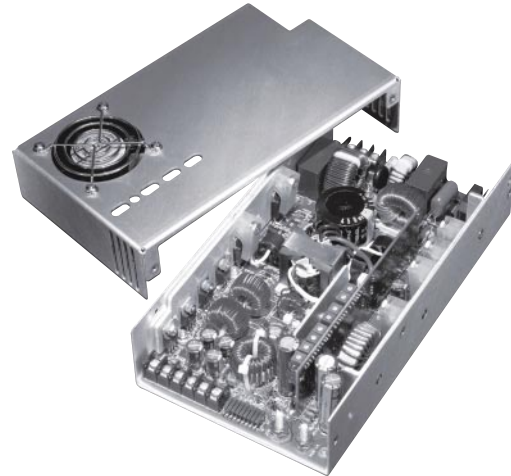
# PFC200

200 Watts output power  
 Power Factor Correction  
 Four Floating Outputs

**H.A.L.T.** Highly Accelerated Life Testing  
 TESTED

### Electrical Specifications

Input Voltage:	85-264 Vac, 47-63 Hz
Input Current:	<4A RMS @ 115V @ full load <2A RMS @ 230V @ full load
Inrush Current:	<35A, pk @ 135 Vac @ cold start <75A, pk @ 264 Vac @ cold start
Power Factor:	>0.99 @ full load @ 115Vac input
Harmonic Distortion:	Meets EN61000-3-2
EMI Filtering:	Meets CISPR 11 and 22 and FCC level B conducted
Input Protection:	Internal ac line fuse
Surge Withstand:	Meets EN61000-4
Output Power:	200W with 30 CFM air; 260W for 20 sec 130W, convection cooled (consult factory for current ratings)
Line Regulation:	<0.1% for Main and Aux 1; <0.25% for Aux 2 and Aux 3
Load Regulation:	<0.25% for Main and Aux 1; <3.0% for Aux 2 and Aux 3 (2.0% for 24 V and above)
Cross Regulation:	<0.1% for Main and Aux 1; <0.25% for Aux 2 and Aux 3
PARD:	Greater of <1% or 50mV; 20MHz bandwidth
Hold-up Time:	>20 ms @ full load
Output Polarity:	All outputs are floating
Minimum Load:	10% on Main output to ensure full regulation on all Aux outputs
Transient Response:	Greater of 150mV or 2% for 25% load change @ 1A/μs
Output Rise Time:	<100 ms (10% to 90%)
Remote Sense:	Std on Main and Aux 1 outputs



AC Power Fail:	TTL logic "0" at least 5ms before dc outputs drop 5%
Remote Margin:	5% Hi and Lo, Main output only
Remote Adjust:	5% with external 0-5 Vdc source, Main output only
Overvoltage Protect:	Factory set, 125% ±5% on Main output, cycle ac to reset
Overcurrent/Short Circuit:	All outputs; auto recovery
Reverse Voltage:	Reverse current up to rated outputs
Thermal Protection:	Auto off; auto reset upon cool down
Efficiency:	70%, typical @ full load
MTBF:	>200,000 hours @ 25°C

### Available Voltage Outputs\*

Main Output Voltages (Volts)	Main Output Current (Amps)	Aux 1 Output Voltages (Volts)	Aux 1 Output Current (Amps)	Aux 2 or 3 Output Voltages (Volts)	Aux 2 or 3 Output Current (Amps)
2.0	25				
3.3	25	3.3	6/12A Pk		
5.0	25	5.0	6/12A Pk	5.0	3
12.0	11	12.0	6/12A Pk	12.0	3
15.0	9.0	15.0	6/12A Pk	15.0	3
24.0	5.0	24.0	4/8A Pk	24.0	1.5
28.0	4.5	28.0	3.3/6.5A Pk	28.0	1
36.0	3.5	36.0	2.5/5A Pk	36.0	1
48.0	3.0	48.0	2/4A Pk	48.0	1

\* Select one output each for Main, Aux 1, Aux 2, and Aux 3 from the available outputs listed.

# Model PFC200

## Options

Fan Supply (12Vdc, 150mA)	Fan/Cover
DC OK	PF Invert
DC OK Invert	Pre-Load
Gold Signal Pins	Remote Invert
Metric Mounting	Molex Connectors
Thermal Latch-Off	Aux 2 Overvoltage Protect Circuit
Remote On/Off with Standby Output of 5.1 Vdc, 100mA	

## Certifications

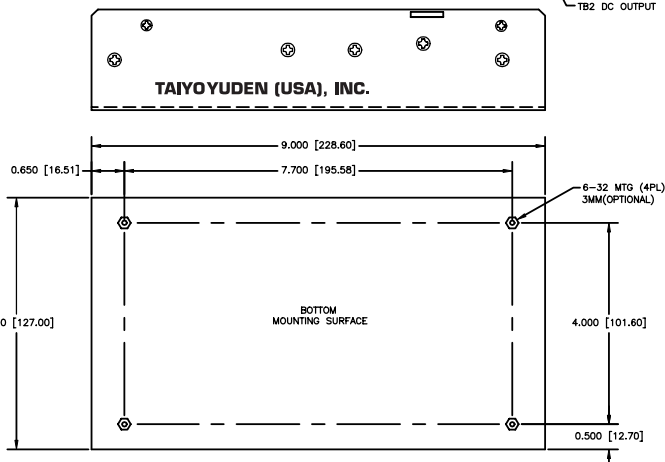
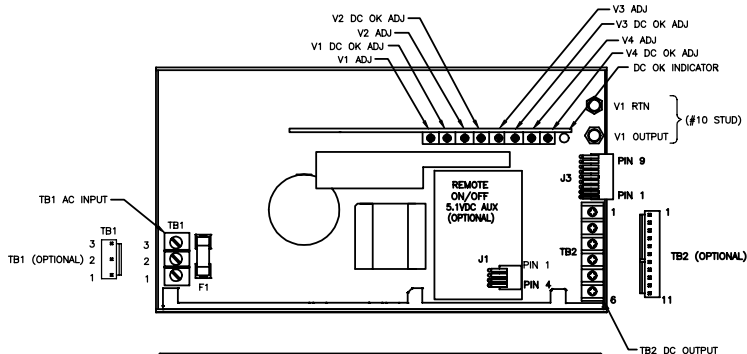
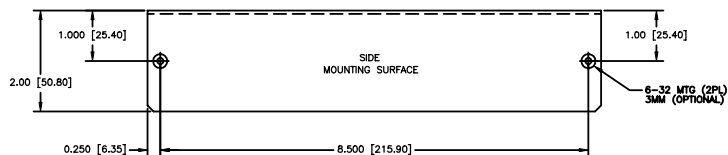
UL1950	CSA C22.2 No. 950 M95
IEC950	EN60950
UL3101-1	EN61010-1
UL3111-1 (US and Canada)	
CSA C22.2 No. 1010.1-92	

## Compliance

EN61000-4	CISPR 11,22
IEC1000-3-2	FCC Docket 20780 for EMI
CE Compliance to Low Voltage Directive	

## Physical Specifications

Dimensions:	2.0" x 5.0" x 9.0"
Finish:	Clear chem film
Operating Temp:	0 to 70°C; rated power to 50°C w/30 CFM air derate linearly to 50% at 70°C.
Relative Humidity:	5% to 90%, RH non-condensing
Storage:	-50 to 85°C/20-90% RH
Altitude:	10,000' operating; 40,000' storage



#6 SCREW  
.250 MAX LUG WIDTH

PIN NO.	TB1
1	CHASSIS GND
2	NEUTRAL
3	AC LINE

OPTIONAL MOLEX CONNECTOR  
FOR AC INPUT

PIN NO.	TB1
1	CHASSIS GND
2	NEUTRAL
3	AC LINE

TB1 HEADER 26-60-4050  
MATES WITH MOLEX 09-91-0500

#6 SCREW  
.250 MAX LUG WIDTH

PIN NO.	TB2
1	V2 RTN
2	V2 OUTPUT
3	V3 RTN
4	V3 OUTPUT
5	V4 RTN
6	V4 OUTPUT

OPTIONAL MOLEX CONNECTOR  
FOR DC OUTPUT

PIN NO.	TB2
1	V2 RTN
2	V2 RTN
3	V2 OUTPUT
4	V2 OUTPUT
5	V3 RTN
6	V3 RTN
7	V3 OUTPUT
8	V3 OUTPUT
9	V4 RTN
10	V4 RTN
11	V4 OUTPUT

TB2 HEADER 26-60-4110  
MATES WITH MOLEX 09-91-1100  
GOLD CONTACTS OPTIONAL

J1 HEADER 22-28-1040  
MATES WITH MOLEX 22-01-2041  
GOLD CONTACTS OPTIONAL

PIN NO.	REMOTE ON/OFF J1
1	+5.1V AUX
2	RTN
3	RTN
4	REMOTE ON/OFF

J3 HEADER 22-28-1090  
MATES WITH MOLEX 22-01-2091  
GOLD CONTACTS OPTIONAL

PIN NO.	J3
1	NOT USED
2	NOT USED
3	DC OK (OPTIONAL) (RTN REF J3-P9)
4	AC POWER FAIL (RTN REF J3-P9)
5	V1 REMOTE ADJ
6	+ REMOTE SENSE V2
7	- REMOTE SENSE V2
8	+ REMOTE SENSE V1
9	- REMOTE SENSE V1

UNIT WEIGHTS

2.68 LBS

© Copyright 2001 Taiyo Yuden (USA), Inc. Specifications subject to change without notice.



**TAIYOYUDEN**

Taiyo Yuden (USA), Inc.

1770 La Costa Meadows Drive

San Marcos, CA 92069

(760) 510-3200 / Fax: (760) 471-4021

(800) 493-6835 www.xentek.com sales@xentek.com



FM 32227