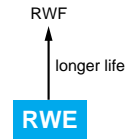




RWE Series

- Rated voltage range : 350 to 550V_{dc}
- Endurance with ripple current : 85°C 2000 hours



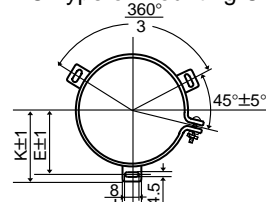
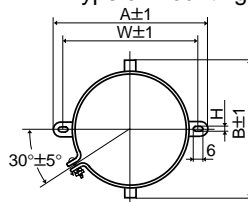
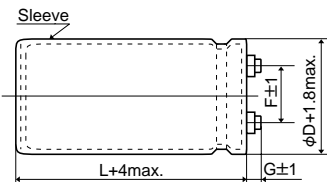
◆ SPECIFICATIONS

Items	Characteristics				
Category Temperature Range	-25 to +85°C				
Rated Voltage Range	350 to 550V _{dc}				
Capacitance Tolerance	±20% (M) (at 20°C, 120Hz)				
Leakage Current	I=0.02CV or 5mA, whichever is smaller. Where, I : Max. leakage current (µA), C : Nominal capacitance (µF), V : Rated voltage (V) (at 20°C after 5 minutes)				
Dissipation Factor (tanδ)	0.25 max. (at 20°C, 120Hz)				
Low Temperature Characteristics	Capacitance change	Rated Voltage (V _{dc})	350 to 450V	500 & 550V	(at 120Hz)
		C(-25°C)/C(+20°C)	≥0.7	≥0.6	
Insulation Resistance	When measured between the terminals shorted each other and the mounting clamp on the insulating sleeve covering the case by using an insulation resistance meter of 500V _{dc} , the insulation resistance shall not be less than 100MΩ.				
Insulation Withstanding Voltage	When a voltage of 2000V _{ac} is applied for 1 minute between the terminals shorted each other and the mounting clamp on the insulating sleeve covering the case, there shall not be electrical damage.				
Endurance	The following specifications shall be satisfied when the capacitors are restored to 20°C after subjected to DC voltage with the rated ripple current is applied for 2000 hours at 85°C.				
	Capacitance change	≤±20% of the initial value			
	D.F. (tanδ)	≤300% of the initial specified value			
	Leakage current	≤The initial specified value			
Shelf Life	The following specifications shall be satisfied when the capacitors are restored to 20°C after exposing them for 500 hours at 85°C without voltage applied.				
	Capacitance change	≤±20% of the initial value			
	D.F. (tanδ)	≤300% of the initial specified value			
	Leakage current	≤The initial specified value			

◆ DIMENSIONS (Terminal Type=LGSN) [mm]

● B Type of Mounting Clamp

● C Type of Mounting Clamp



φD	A	B	W	H	F
35	58	44	48	3.5	12.7
50	78	64	68	4.5	22.4
63.5	90	76	80	4.5	28.0
76	104.5	90	93.5	4.5	31.5

φD	E	K	F	J
50	32.5	37.0	22.4	14.0
63.5	38.1	43.5	28.0	14.0
76	44.5	50.0	31.5	14.0
89	50.8	56.5	31.5	16.0

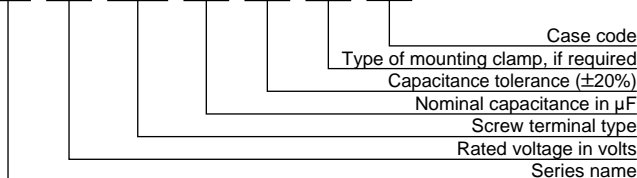
φ35 to φ63.5 : G=6
φ76 & φ89 : G=5

<Screw specifications>
Plus hexagon-headed screw:
M5×0.8×10
Maximum screw tightening torque:
3.23Nm

* The screw and the mounting clamp are separately supplied and not attached to the product.

◆ PART NUMBERING SYSTEM

RWE 550 LGSN 820 M C C13



◆STANDARD RATINGS

μF \ V _{dc}	350		400		450		500		550															
100	<div style="display: flex; justify-content: space-around;"> <div style="text-align: center;"> <p>Case code</p> <p>Rated ripple current (Arms) at 85°C, 120Hz</p> </div> </div>																		A5	0.6				
120																	A5		0.7					
180															A5		1.6		A8		1.2			
270															A5		1.6		A8		1.2			
330													A5		1.7				A10		1.4			
390	A5		1.9						A12		1.7													
470					A8		2.4		C7		1.8													
560			A8		2.7						C9		D9		2.1		2.5							
680	A8		2.9				A10		3.1		C9		2.5		C11		D11		2.7		3.0			
820			A10		3.4		A12		3.5		C11		2.9		C13		D13		3.1		3.5			
1,000	A10		3.8		A12		3.9		C7		3.9		C13		D9		3.4		3.4					
1,200	A12		4.2		C7		4.2		C9		4.7						E9		4.2					
1,500	C7		4.7						C11		5.6		D11		E9		4.5		4.6		E11		5.0	
1,800					C9		5.7		C13		6.5		D13		5.2		E13		5.8					
2,200	C9		6.3		C13		7.2		D9		7.2		E11		6.1		E15		7.0					
2,700					D9		7.9		D11		8.6		E15		7.7									
3,300	C13		D9		8.8		8.8		D11		9.5		D13		E9		10.0		9.8		F15		9.3	
3,900	D11		10.3		D13		E9		10.9		10.6		E11		11.5		F15		10.1					
4,700	D13		E9		12.0		11.7		E11		12.6		E13		13.3									
5,600	E11		12.6		E13		14.5		E15		15.7													
6,800	E13		15.9		E15		17.3																	
8,200	E15		19.0						F15		18.6													
10,000					F15		20.5																	
12,000	F15		22.5																					

◆CASE CODE

$\phi\text{D (mm)}$ \ L (mm)	50	75	80	96	100	115	120	130	155
35	A5	—	A8	—	A10	—	A12	—	—
50	—	C7	—	C9	—	C11	—	C13	—
63.5	—	—	—	D9	—	D11	—	D13	—
76	—	—	—	E9	—	E11	—	E13	E15
89	—	—	—	—	—	—	—	—	F15

◆RATED RIPPLE CURRENT MULTIPLIERS
●Frequency Multipliers

Frequency (Hz)	50	120	300	1k	3k
Coefficient	0.8	1.0	1.1	1.3	1.4

Note : The endurance of capacitors is shorted with internal heating produced by ripple current at the rate of halving the lifetime with every 5 to 10°C rise. When long life performance is required in actual use, the rms ripple current has to be reduced. Also, for the RWE series capacitors, using them at operating voltage less than their rated voltage can extend their lifetime. For the details, please contact a representative of Nippon Chemi-Con.