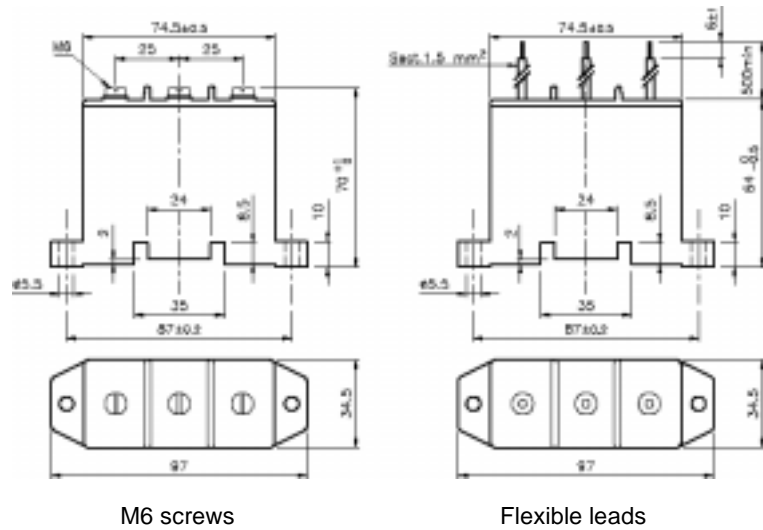


RC three-phase

Typical applications: RC units are used to eliminate transient phenomena whilst a circuit is being switched.

PRODUCT CODE: FA3



All dimensions are in mm

GENERAL TECHNICAL DATA

Climatic category:

25/085/21 IEC 60068-1

Insulation resistance (I_r):

≥ 3 · 10⁴ MΩ

Rated voltage (V_R):

750 Vac r.m.s. of sinusoidal value at 50/60 Hz.

Nominal rating of the resistance:

R = 20 Ω or 180 Ω

Power rating of the resistance: 1W

Test voltage between terminals:

1000 Vac applied for 2 s at a temperature of 25 ± 5 °C.

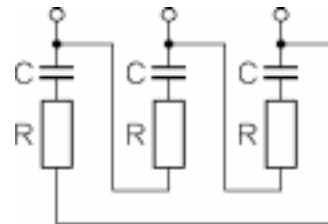
Protection:

Self-extinguishing plastic case and cover, inside components sealed with polyurethane resin.

Connections:

M6 Screws or flexible leads.

Circuit diagram:



Available models

Rated capacitance	R (Ω)	Connections		Part Number
		M6 screws	Flexible leads	
0.22 μF	20	X		F.A3.ZZ.3220.ZF
0.22 μF	20		X	F.A3.ZZ.3220.ZG
0.22 μF	180	X		F.A3.ZZ.3220.ZH