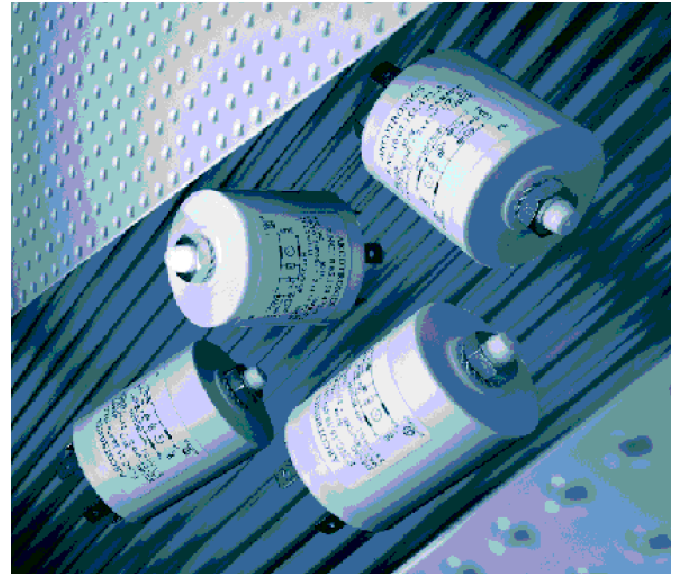


Stud mounting

A range of compact, plastic case suppression filters offering high levels of performance to size ratio.

Ideally suited for consumer goods, domestic appliances and business equipment.

- Current ratings from 10A to 16A
- Ten performance variants available
- Compact, low-cost package
- Fast-on terminations



Mechanical Specifications

Manufacture: self-extinguishing plastic case UL-94V2;
deck UL-94V0;
plastic fixing studs M8x10;
internal components sealed with UL-94V2 self-extinguishing resin;
washer and nut separately packed

Connections: 5 faston 6.3x0.8 mm

Available options: 2 additional wire leads. 1.5mm² section

Electrical Specifications

Rated voltage (V_R): max 275 V, 50/60 Hz

Rated current (I_R): referred to room temperature = 40°C

Leakage current (I_L): at 220 V, 50 Hz, max value

Voltage test (2 s.): line to ground 3000 Vdc or 1800 Vac
line to line 1700 Vdc

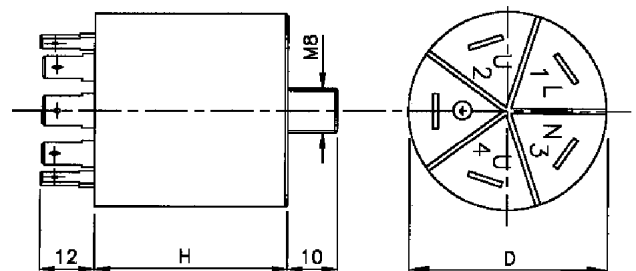
Climatic category: HMF (25/100/21);
Temperature range: -25°C to +100°C

Filter Range

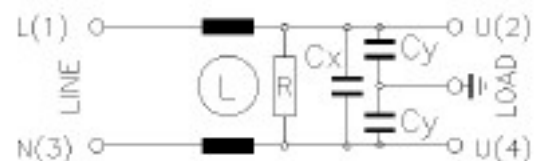
Code	I_R (A)	L (mH)	C_x (μ F)	C_y (pF)	I_L (mA)	R (M Ω)	DxH (mm)
F.NC.10.05.154.472.A	10	0.5	0.15	2 x 4700	2 x 0.43	1	40 x 40
F.NC.10.05.154.103.A	10	0.5	0.15	2 x 10000	2 x 0.91	1	40 x 40
F.NC.10.05.474.253.A	10	0.5	0.47	2 x 25000	2 x 2.3	0.68	40 x 40
F.NC.10.05.474.273.A	10	0.5	0.47	2 x 27000	2 x 2.5	0.68	40 x 40
F.NC.16.10.254.273.A	16	1	0.25	2 x 27000	2 x 2.5	1	40 x 50
F.NC.16.10.474.472.A	16	1	0.47	2 x 4700	2 x 0.43	0.68	40 x 50
F.NC.16.10.474.103.A	16	1	0.47	2 x 10000	2 x 0.91	0.68	40 x 50
F.NC.16.10.474.253.A	16	1	0.47	2 x 25000	2 x 2.3	0.68	40 x 50
F.NC.16.10.474.273.A	16	1	0.47	2 x 27000	2 x 2.5	0.68	40 x 50
^s F.NC.16.10.684.273.A	16	1	0.68	2 x 27000	2 x 2.5	0.47	40 x 50

^s Approval pending

Dimensions (mm) and connections



Circuit diagram



Cylindrical Case Filters

F.NC series

Insertion loss (typical): --- Asymmetrical (line to ground) - - - Symmetrical (line to line)

