

### Three phase and neutral - general performance

This three phase and neutral filter series provides a good level of attenuation across a broad frequency spectrum. The filter housing's small footprint and low-profile ensures ease of installation within manufacturers original equipment.

The AD series is particularly suited for UPS, switch mode power supplies, industrial control systems and other such applications.

- Current ratings from 16A to 25A
- High symmetric and assymmetric attenuation
- Screw or fast-on termination
- Low-profile and compact enclosure
- Captive nut mounting

### Mechanical Specifications

Manufacture: metal case; captive nut M5 for mounting, electrical components sealed with self-extinguishing resin.

Connections: faston 6.3 x 0.8 mm (16A), threaded bar with metric nut M4 (25A)



### Electrical Specifications

Rated voltage ( $V_R$ ): max 440V (ph-ph), 50/60Hz

Rated current ( $I_R$ ): referred to room temperature = 40°C

Leakage current ( $I_L$ ): at  $V_R / 3$ , 50 Hz max value

Voltage test (2s.): line to ground 2700 Vdc  
line to line 1700 Vdc

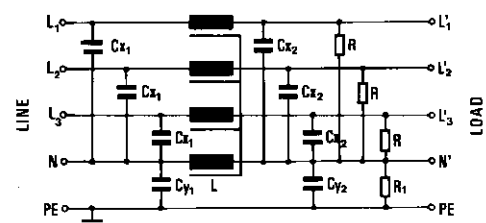
Climatic category: HPF (25/085/21):

Temperature range: -25°C to +85°C

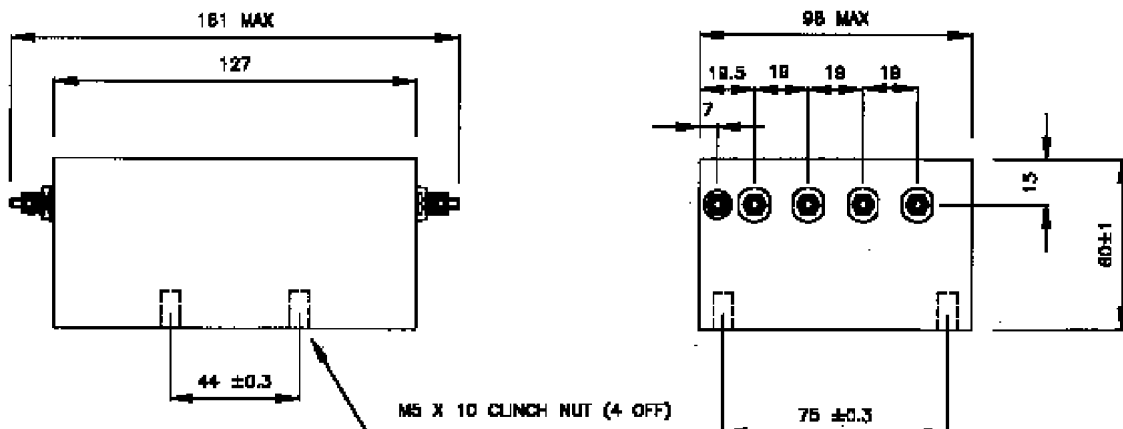
### Filter Range

Code	$I_R$ (A)	L (mH)	$C_{X1}$ ( $\mu$ F)	$C_{X2}$ ( $\mu$ F)	$C_{Y1}$ (pF)	$C_{Y2}$ (pF)	$I_L$ (mA)	R (M $\Omega$ )	$R_1$ (M $\Omega$ )
F.LL.D3.016A.AD.01	16	4 x 1.8	3 x 1	3 x 1	15000	15000	<3.2	3 x 0.33	0.62
F.LL.D3.025A.AD.01	25	4 x 1.1	3 x 1	3 x 1	15000	15000	<3.2	3 x 0.33	0.62

### Circuit diagram



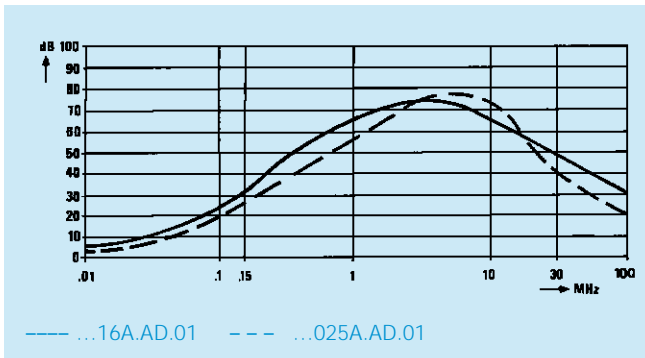
### Dimensions (mm) and connections



# Chassis Mount Filters

## F.LL.D3 series-AD type

Insertion loss (typical): Asymmetrical (line to ground)



Insertion loss (typical): Symmetrical (line to line)

