

### Three phase and neutral - high performance

This three phase and neutral filter series provides a high level of attenuation across a broad frequency spectrum. The filter housing's small footprint and option of flange or M5 captive nut mounting, ensures ease of installation within manufacturers original equipment. The AB series is particularly suited for UPS, switch mode power supplies, industrial control systems and other such applications.

- Current ratings from 25A to 63A
- Choice of performance options
- High symmetric and assymmetric attenuation
- Screw or terminal block connectors
- Compact enclosure styles
- Captive nut or flange mounting designs

### Mechanical Specifications

**Manufacture:** tin-plate case with captive nut M5 for mounting, on D3.25A, 36A, 50A, 63A  
with mounting flanges on D4.36A, 50A  
electrical components sealed with resin

**Connections:** threaded bar with metric nut M6;  
D4.36A with terminal blocks to accept 10mm<sup>2</sup> cable.  
D4.50A with terminal blocks to accept 25mm<sup>2</sup> cable.

### Filter Range

Code	I <sub>R</sub> (A)	L (mH)	C <sub>X1</sub> (μF)	C <sub>X2</sub> (μF)	C <sub>Y1</sub> (pF)	C <sub>Y2</sub> (pF)	I <sub>L</sub> (mA)	R (MΩ)	Case
F.LL.D3.025A.AB.01	25	4x1.2	3x2.2	3x2.2	2x15000		<3.2	3x0.47	A
F.LL.D3.036A.AB.01	36	4x0.95	3x2.2	3x2.2	2x15000		<3.2	3x0.1	A
F.LL.D4.036A.AB.03	36	4x1.3	3x2.2	3x2.2	2x15000		<3.2	3x0.1	D
F.LL.D3.050A.AB.01	50	4x2.0	3x2.2	3x2.2	2x15000		<3.2	3x0.47	B
F.LL.D4.050A.AB.R3	50	4x0.5	3x2.2	3x2.2	2x22000	3x4700	<6.1	3x0.1	E
F.LL.D3.063A.AB.01	63	4x0.7	3x2.2	3x2.2	2x15000		<3.2	3x0.47	B
F.LL.D3.063A.AB.08	63	4x0.7	3x2.2	3x2.2	2x15000		<3.2	3x0.47	C



### Electrical Specifications

**Rated voltage (V<sub>R</sub>):** max 440V (ph-ph), 50/60Hz

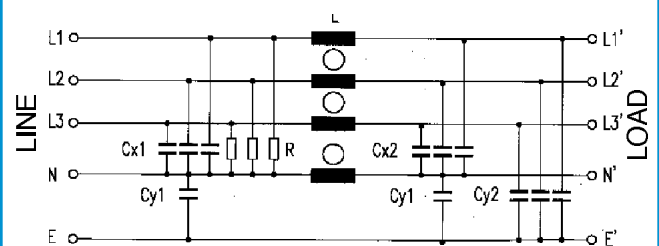
**Rated current (I<sub>R</sub>):** referred to room temperature = 40°C

**Leakage current (I<sub>L</sub>):** at V<sub>R</sub> / 3, 50 Hz max value

**Voltage test (2<sub>s</sub>):** line to ground 2700 Vdc  
line to line 1075 Vdc

**Climatic category:** HPF (25/085/21):  
Temperature range: -25°C to +85°C

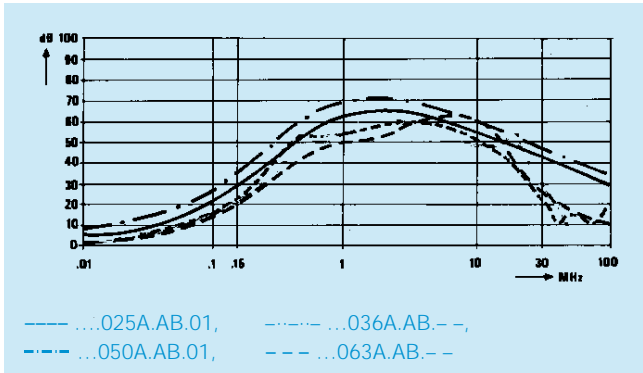
### Circuit diagram



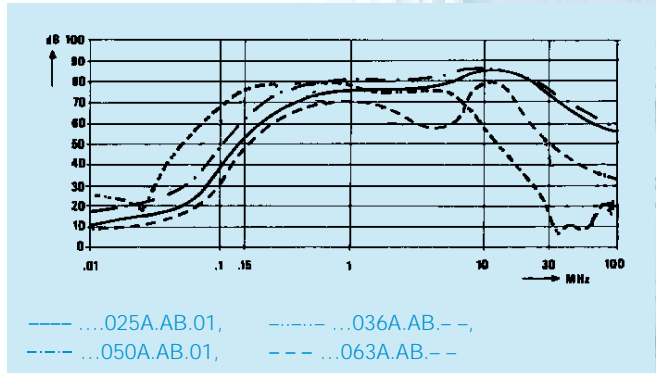
# Chassis Mount Filters

## F.LL.D3 series-AB type

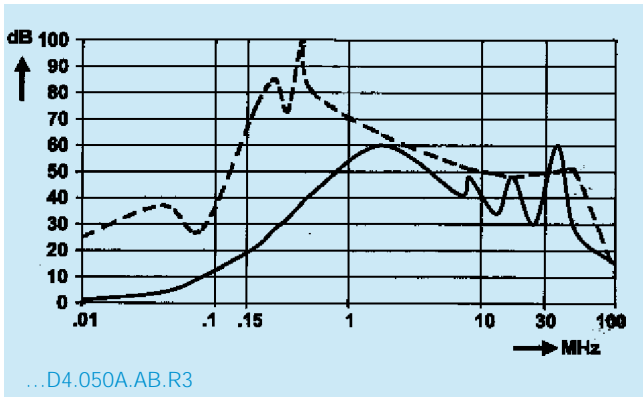
Insertion loss (typical): Asymmetrical (line to ground)



Insertion loss (typical): Symmetrical (line to line)



Insertion loss (typical): --- Asymmetrical (line to ground)    --- Symmetrical (line to line)



### Dimensions (mm) and connections

