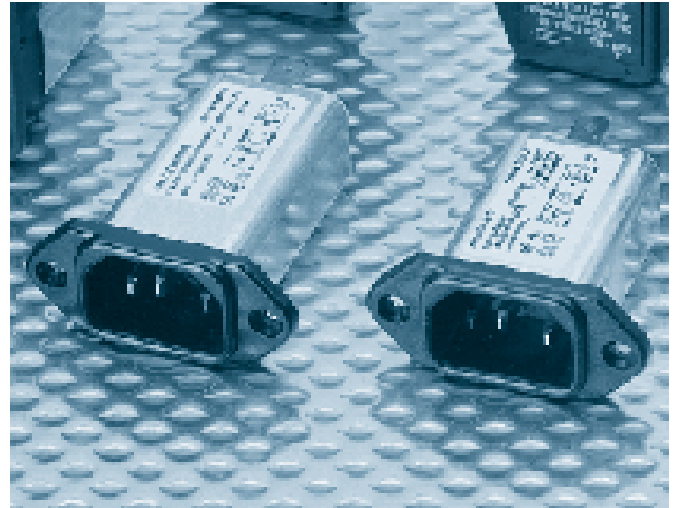


Higher performance modules

A range of chassis mount IEC 60320 inlet power entry modules providing a high level of suppression with a low leakage current. Typical applications include business, consumer and medical equipment, VDU's, computers and many general purpose applications.

- Current ratings from 1A to 3A
- High performance to size ratio
- Medical versions available
- Earth line choke options available



Mechanical Specifications

Manufacture: metal case with built-in power line connector according to IEC 60320 & EN 60320. Internal components sealed with self-extinguishing resin.

Connections: IEC 60320 - Standard plug (INPUT);
faston 2.8 x 0.5 mm or 6.3 x 0.8 mm (OUTPUT);
ground terminal connected to case.

Electrical Specifications

Rated voltage (V_R): max 250 V, 50/60 Hz
 Rated current (I_R): referred to room temperature = 40°C
 Leakage current (I_L): at 220 V, 50 Hz, max value
 Voltage test (2s): line to ground 3000 Vdc or 1800 Vac
 line to line 1700 Vdc
 Climatic category: HPF (25/085/21):
 Temperature range: -25°C to +85°C

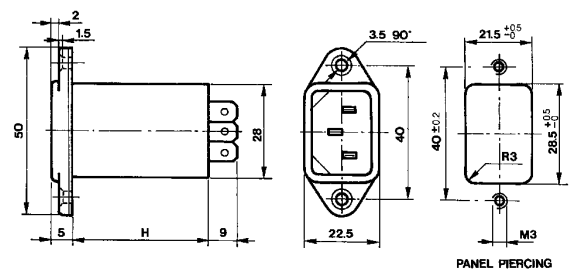
Filter Range

Code	I_R (A)	L (mH)	C_{X1} (μF)	C_{X2} (μF)	C_Y (pF)	I_L (mA)	R ($M\Omega$)	H (mm)
F.AN.-.3100.ZD	3	2x6min		0.1	2x 150	2x0.014	2.2	50
s F.AN.-.3136.ZA	1	2x10	0.068	0.068	2x2500	2x0.23		55
s F.AN.-.3136.ZB	3	2x2.5	0.068	0.068	2x2500	2x0.23		55
F.AN.-.3136.ZC	2.5	2x6	0.068	0.068	2x3200	2x0.29	2.2	50
F.AN.-.3136.ZD	1	2x10	0.068	0.068	2x2500	2x0.23	1	55

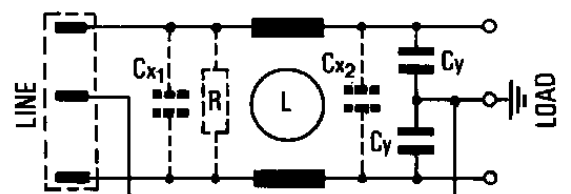
- A = Faston 2.8 x 0.5 mm
- B = Faston 6.3 x 0.8 mm
- A = Standard Version
- M = Medical Version

s Available with earth line chokes (without approvals)

Dimensions (mm) and connections



Circuit diagram



IEC Inlet Filters

F.AN series

Insertion loss (typical): - - - - Asymmetrical (line to ground) - - - Symmetrical (line to line)

