

CL configuration, film dielectric

Feed through filter range using film capacitor technology to achieve good temperature stability. The units are housed in robust, sealed metal containers of threaded construction, and offer a range of terminal finishes. Specifically designed for military, industrial, telecoms and medical applications, but especially suitable for use where fast rising transients are liable to be encountered.

- Capacitive values from 100nF - 820nF
- Self healing capacitors
- Wide choice of performance options
- Superior pulse current capability
- Excellent temperature stability
- Wire or tag termination options

Mechanical Specifications

Manufacture: resin sealed metal containers

Connections: wire or tag terminations

Case Variants

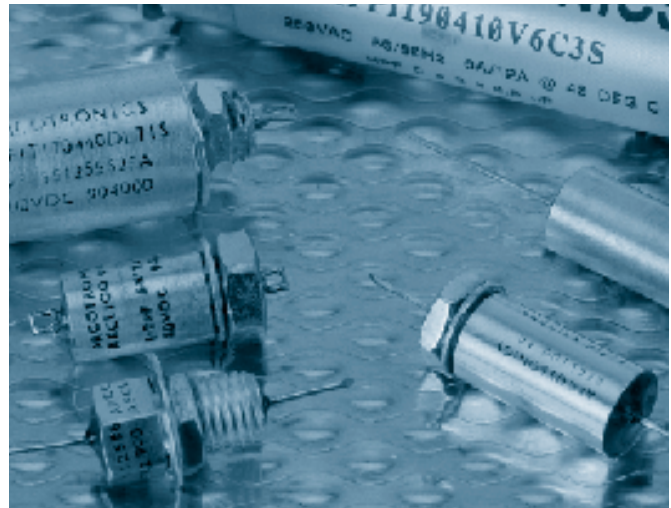
Style	Length (mm)		Wire dia. ± 0.2mm	Thread
	L1 max	L2 max		
1	19.1	4.95	1	M6 x 1
2	19.1	8	1	M6 x 1
3	14.2	4.95	1	M6 x 1
4	14.2	8	1	M6 x 1

Filter Range - AFCL 100

(example pt no. - AFCL100322LJW1S)

Code	Max values		C (nF) ± 20% at 1kHz	V _R		V _C		Typical Insertion loss (dB)								Pulse capa- bility V/us	CCT
	IR(A) dc or rms	Rdc (mΩ)		dc	ac	dc	ac	(MHz)									
								0.1	0.3	1	10	100	400				
322LJ -1-	10	6	220	350	125	200	115	9	19	28	46	49	68	600	1		
347JJ -1-	10	6	470	250	-	100	-	11	22	35	48	49	68	600	1		
382DJ -1-	10	6	820	100	-	50	-	22	30	41	46	53	68	490	1		
310LJ -3-	10	6	100	350	125	200	115	-	11	22	40	48	63	800	1		
322JJ -3-	10	6	220	250	-	100	-	9	18	28	46	49	68	700	1		
347DJ -3-	10	6	470	100	-	50	-	11	22	35	48	49	68	600	1		
347DH -1-	5	15	470	100	-	50	-	16	26	38	58	61	68	600	2		
347DG -1-	3	40	470	100	-	50	-	16	27	41	63	63	68	600	2		
347DF -1-	1	200	470	100	-	50	-	26	39	53	65	63	68	600	2		
322JH -1-	5	15	220	250	-	100	-	11	20	30	53	57	63	700	2		
322JG -1-	3	40	220	250	-	100	-	12	23	37	64	62	68	700	2		
322JF -1-	1	200	220	250	-	100	-	20	31	49	70	55	68	700	2		
310LH -1-	5	15	100	350	115	200	115	-	13	25	47	57	68	800	2		
310LG -1-	3	40	100	350	115	200	115	-	16	29	55	61	68	800	2		
310LF -1-	1	200	100	350	115	200	115	14	27	43	61	63	68	800	2		

- Case finish: T = Tin plated, S = Silver plated, G = Gold plated
- Case style available: 2 instead of 1; 4 instead of 3
- Termination: W = Wire, T = Tag
- at 400 Hz
- ac voltage ratings below 115V
- have not been specified.



Electrical Specifications

Rated voltage (V_R): see table

Category voltage (V_C): see table

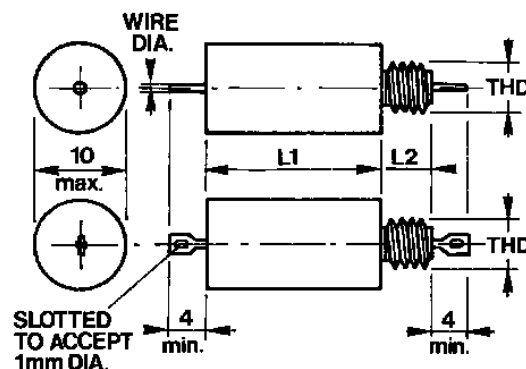
Rated current (I_R): referred to room temperature = 40°C

Voltage test (2s.): 1.6 V_R dc

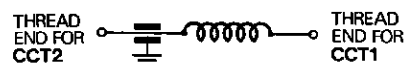
Climatic category: (55/125/56;)

Temperature range: -55°C to +125°C

Dimensions (mm) and connections



Circuit diagram (CL configuration)



Approvals

BS 9121 F0020

Meet MIL-F-15733 requirements